

Aprehend



FIELD NOTES

Hope Rescue Mission: Using Aprehend® to improve the residents' quality of life

Background

Hope Rescue Mission has been offering a place of refuge for the homeless men near Reading, PA since 1894. Their housing programs are based in a former Reading Railroad YMCA dating from the 1920s.

The "Safe Haven" program offers food, clothing and shelter to 70 men daily. Men are provided a single bed and a lockable wardrobe in a dormitory setting. "Code Blue" operates throughout the winter months and provides emergency shelter for up to 110 men nightly. Men are provided a single mattress, sleeping bag, and pillow in a former YMCA gym that is full of bunk beds.

The "Transitional Housing Program" has 100 rooms and helps men who have found employment but have no housing. It gives them the opportunity to rent an individual room for six months while they work and save money for their own place.

The Mission also operates two "outlets" where they sell used clothing and household items and operates a kitchen that feeds from 100 to 150 people each meal, breakfast, lunch and dinner.

Pest Management and Bed Bug Control

Pest control is handled by licensed techs from their Maintenance Staff. The "Safe Haven" area was recently renovated and a conscious decision was made to eliminate wooden furniture and bed frames to reduce potential harborage sites, as well as to use caulking to seal wall voids or spaces adjacent to baseboards.



Figure 1 Unloading items for the Mission outlet



www.aprehend.com

800.891.8610

Aprehend[®]
Ready to use

Figure 2 Recently renovated Safe Haven dormitory



Figure 3 Typical Safe Haven sleeping area



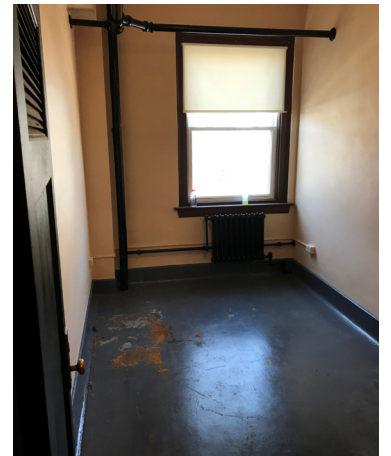
Current treatment is a 2" barrier layer of Aprehend® around the perimeter of each sleeping area every other week and a mixture of Gentrol® IGR, and Zenprox® EC on the mattresses.

With the recent renovation there has also been an introduction of on-site laundry facilities which has proven critical and the residents are provided with fresh linens every week in the dormitory.

In Transitional Housing, 10 rooms/day are treated over a 2-week period, every quarter. They felt that in the past by using a chemical-only treatment that they were creating a pesticide resistant pool of bed bugs. Adequate control was never achieved, and complaints from residents were frequent. Now with the introduction of Aprehend® as part of the protocol, complaints have dropped to almost zero.

Staff acknowledges the difficulty of ever reaching 100% eradication. The key challenges are the highly transient and transitional population, and the threat of re-introduction by residents who work at the adjacent Thrift Store/Outlet which accepts furniture and clothing from across the region. Having now reduced incidents and complaints to "almost zero, the quality of life is so much better" for residents.

Figure 4 A typical room for Transition Housing



Summary

In challenging situations such as this, Aprehend®, with its 3-month residual efficacy, provides long-term protection from establishment of infestations even when frequent bed bug introductions are inevitable.

for
MORE
info

View and download case studies and much more technical information at www.aprehend.com

www.aprehend.com

800.891.8610

ConidioTec
Natural Urban Pest Control